

★ ★
★ ★

HOTEL DES BALANCES

LUZERN

Charme & Excellence

Seminar documentation



Table of contents

Thank you...	2
About us	3
Central location	3
Rooms.....	3
Prices.....	3
Gastronomie	3
Easy acces.....	4
Distances	4
Social and cultural programme.....	4
Seminar packages	5
Rates	5
Room prices.....	6
Infrastructure.....	6
Settings and seating capacity	7

Thank you...

... for your interest in our hotel. We have exceptional facilities to meet your needs. Choose from our elegant banquet rooms, comfortable conference rooms, or tastefully appointed meeting rooms. Modern interior design, coupled with our first-class service is the strong support you need for a successful event.

About us

Central location

Picture your event in a historic building in the heart of Lucerne – with most spectacular view of the Reuss and the Covered Chapel Bridge. The picturesque Old Town, the amazing Swiss Alps and the many fantastic sights in the area, all add to the appeal of your event.

Rooms

Our elegant, 4 Star Hotel has 57 tastefully appointed rooms in various categories, all of which, are comfortably equipped with a bath, shower (or both), a minibar, TV, radio and direct-dial telephone. Coffee and tea appliances are available.

Prices

Price on request - the rooms for a seminar are always available at the best possible price.

The Prices are per room and night in CHF, inclusive of service and VAT exclusive of taxes and buffet breakfast.

Gastronomie

Newly opened on 1 April 2005, our restaurant is reborn with exciting new impulses and the unmistakable charm of the familiar. We have put considerable effort into creating a new sense of harmony with the elements that surround and inspire us. Our unique location alongside the boundless energy of the Reuss River, our historical legacy in all its architectural splendor, and our passion for tasteful modern elegance Rich, warm, natural tones unfold and the scene is set for our Chef Andy Fluri to perform his culinary magic.

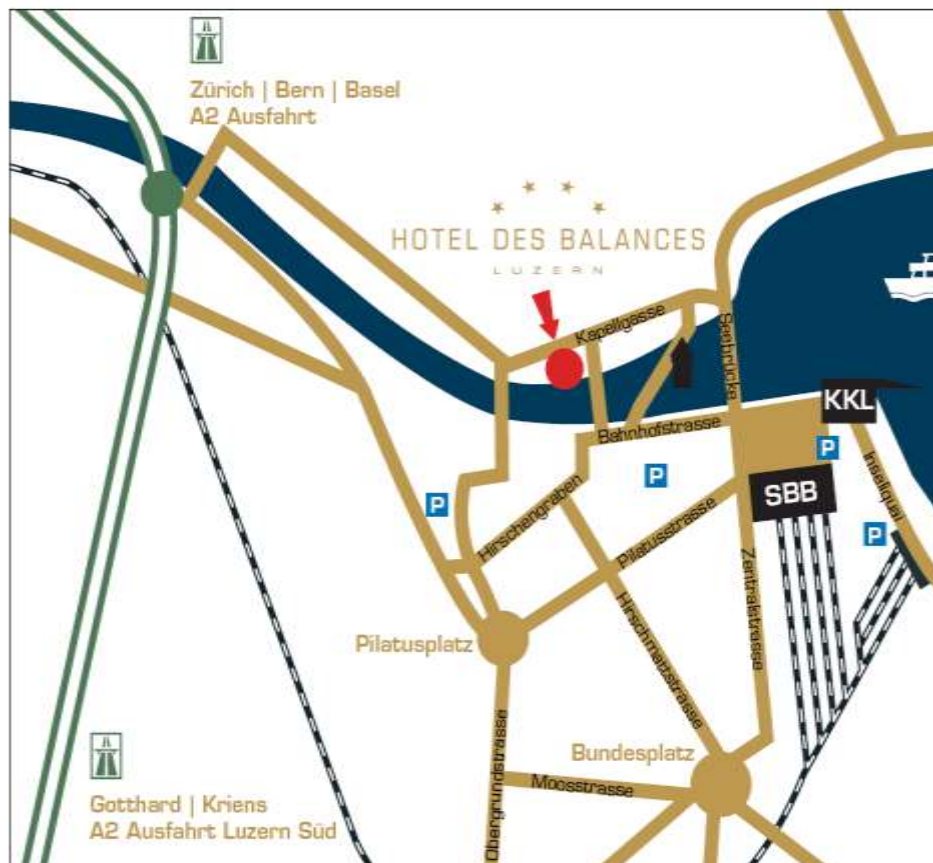
Our '14 Gault-Millau-Point Award Winning' Culinary Artist and his crew, anxiously await the opportunity to spoil you at lunch or dinner with a superb rendition of classical French cuisine. Or let us surprise you with a market fresh creation inspired by the season. Whether you are a connoisseur or simply appreciate good wines, you will surely find a superb selection on our Wine List.

Easy acces

With the motorway exit to Lucerne just minutes away from the Old Town, reaching the Hotel by car could not be simpler. And as most of the city's major car parks are within walking distance, your guests are sure to have a hassle-free journey.

Distances

Basel 94 km
Geneva 274 km
Zurich 60 km
Bern 110 km
Chiasso 198 km



Social and cultural programme

Lucerne with its spectacular surroundings can make you an offer that you can't refuse. There is so much to do and see in the area to complement your event, that you may have difficulties coming to a decision. Feel free to contact us, we will be happy advise you, and make the necessary arrangements for you.

Seminar packages

Rates

<u>Daily rate (from 8 people)</u> Mineral water during seminar Welcome coffee Morning coffee break with coffee, tea, fruit juices, fruits, croissants and snacks Afternoon coffee break with coffee, tea, fruit juices, fruits, cakes and snacks Coffee machine in the plenary room 3-course business Lunch or 3-course buffet lunch Rent of the plenary room from 8am to 5pm, including Flip chart, Pin board, Beamer and screen Seminar-Set (pad and pen)	CHF 110.00
<u>Daily rate „light“ (from 8 people) – without dessert</u>	CHF 100.00
<u>Half-day Seminar package rate – Morning</u> Mineral water during seminar Morning coffee break with coffee, tea, juice and croissants/rolls Rent of the plenary room from 8am to 12am, including Flip chart, Pin board, Beamer and screen	CHF 37.00
<u>Half-day Seminar package rate – Afternoon</u> Mineral water during seminar Afternoon coffee break with coffee, tea, fruit juices, fruits, cakes and snacks Rent of the plenary room from 1pm to 5pm, including Flip chart, Pin board, Beamer and screen	CHF 40.00

For seminars with a number of persons under 8 we charge all services individually.

Consumption per day

Mineral water flat rate for the duration of the seminar per day	CHF 10.00 p.P.
Coffee break Morning: coffee, tea, fruit juices, fruits, croissants and snacks	CHF 12.00 p.P.
Coffee break Afternoon: coffee, tea, fruit juices, fruits, cakes and snacks	CHF 15.00 p.P.
2-course business Lunch or 2-course buffet lunch	CHF 38.00 p.P.
3-course business Lunch or 3-course buffet lunch	CHF 48.00 p.P.

Room prices

	Room size	Meetings / Conferences	
		daily use	half day use
Salle Des Balances	108m ²	CHF 800.00	CHF 500.00
Salle Bellevue I	25 m ²	CHF 220.00	CHF 150.00
Salle Bellevue II	50 m ²	CHF 440.00	CHF 300.00
Salle Bellevue (I & II)	75 m ²	CHF 660.00	CHF 450.00

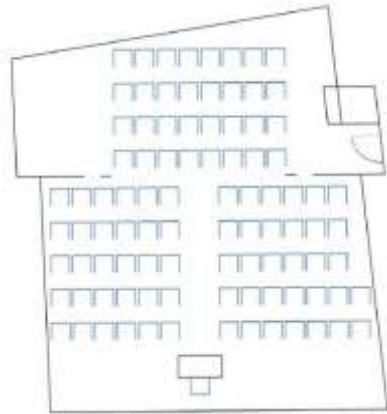
Hotel lobby with view to the river is free of charge for cocktails, aperitifs and welcoming reception!

Infrastructure

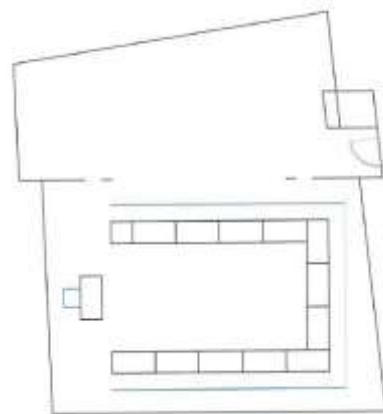
Media Tower flat rate <i>Beamer, DVD-Player & stereo equipment</i>	CHF 250.00
OHP projector incl. screen	CHF 60.00
Flip Chart	CHF 30.00
Pin board	CHF 30.00
Loudspeaker system flat rate <i>Pioneer DJ mixer</i> <i>Microphone with 10m cable and stand</i> <i>2 Active speakers</i> <i>1 Subwoofer</i>	CHF 240.00
Wireless microphone	CHF 50.00
stage element (1.40m x 0.70 und height: 0.4m)	CHF 15.00
TV	CHF 90.00
Notebook	CHF 70.00
conference phone	CHF 200.00
Telefax	according costs
ISDN Access	free of charge
W-LAN	free of charge
Photocopies black & white	CHF 0.50 p.C.
Photocopies coloured	CHF 1.00 p.C.
Transparence copies	CHF 1.50 p.C.

Settings and seating capacity

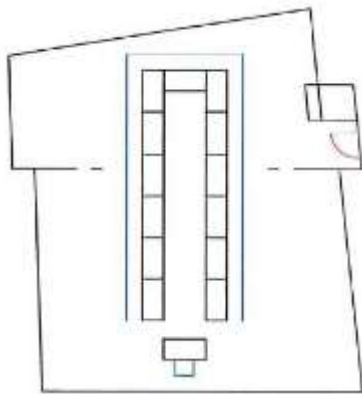
Salle Des Balances



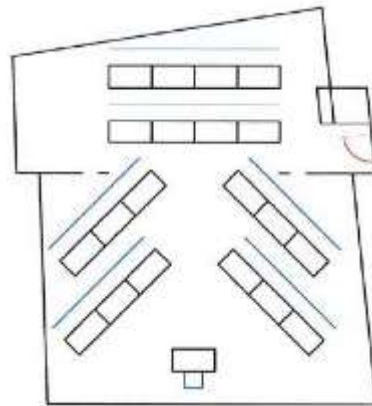
Concert style
max. 94 persons



U-style
max. 25 + 1 persons

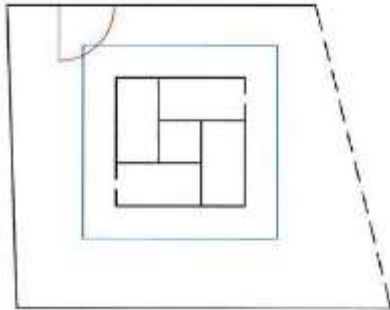


U-style
max. 26 + 1 persons

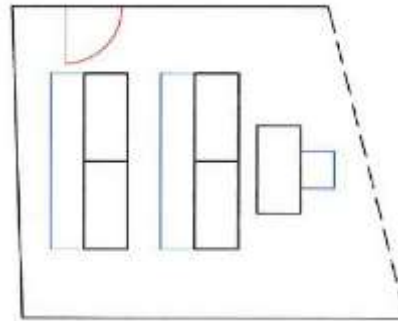


Fishbone style
max. 40 + 1 persons

Bellevue I

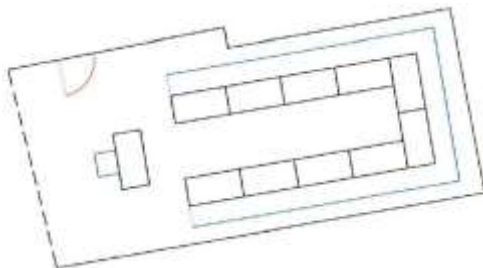


Rectangulaire style
max. 8 persons

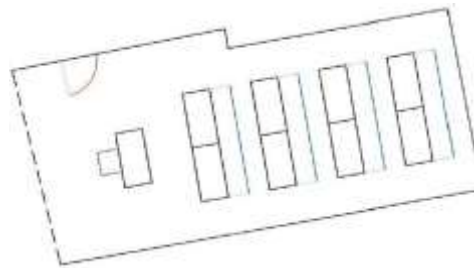


Class room style
max. 8 + 1 persons

Bellevue II

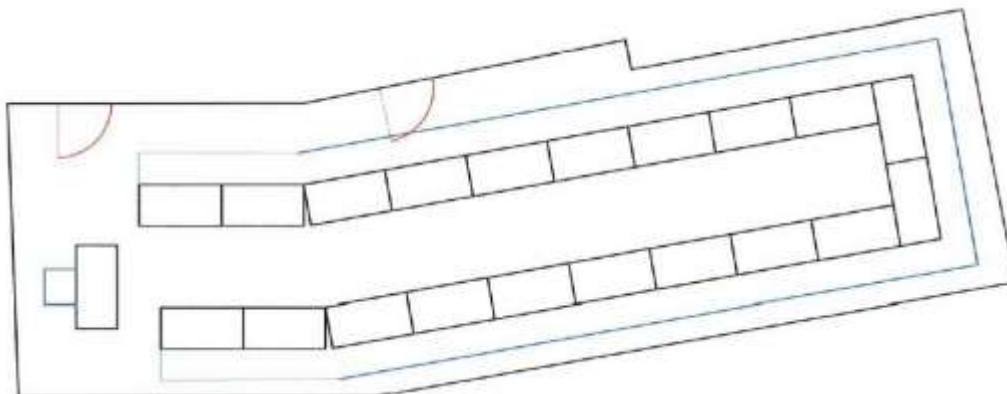


U-style
max. 20 + 1 persons



Class room style
max. 16 + 1 persons

Bellevue I & II



U-style
max. 30 + 1 persons